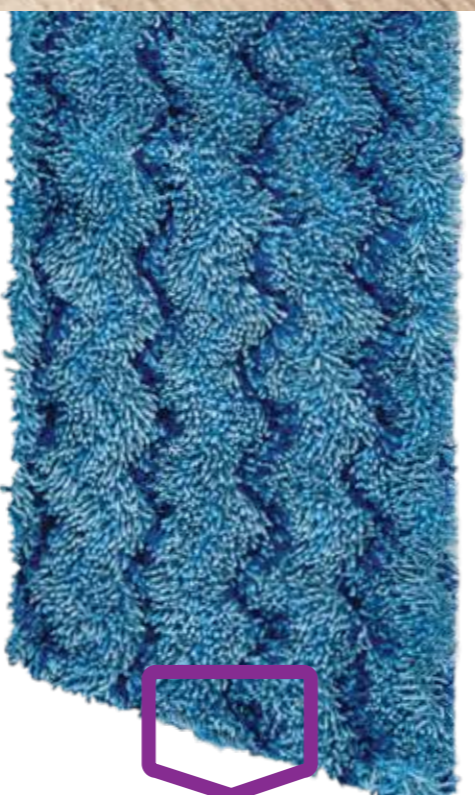




POWERMAX™
MULTI-SURFACE
FLOOR CLEANER

Breaks Down Dirt & Grime 2X Faster*
*Compared to Rejuvenate™ All Floors Cleaner

Citrus & Cedarwood Scent



SCRUBBING MICROFIBERS
BREAK APART & CLEAN
STUBBORN DIRT

Dry & Wet Cleaning

MICROFIBERS LIFT & TRAP
DIRT, HAIR & DUST



Rejuvenate™

Click n Clean™
Multi-Surface Spray Mop



POWERFUL CLEAN!



- ▶ 10,000 Scrubbing Microfibers
- ▶ Washable 100+ Times = Saves up to \$55+
- ▶ Use Wet or Dry

VALUE PACK KIT INCLUDES:



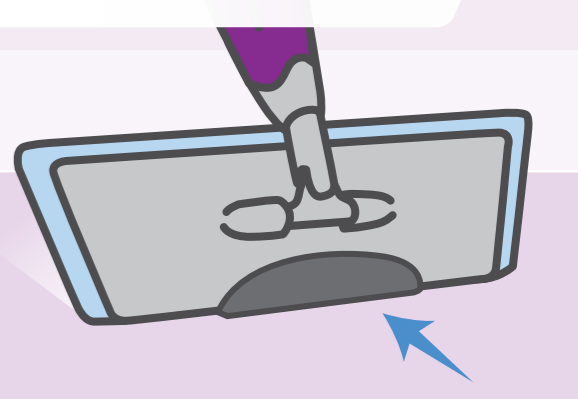
Contains: 1 - Rejuvenate™ PowerMax™ Multi-Surface Floor Cleaner
Net Contents 32 fl oz (1qt / 946 mL)
See back for ingredient and precautionary information.

*Compared to Rejuvenate™ All Floors Cleaner
†Washable Rejuvenate Microfiber Cleaning Pad. Wettable pad compared to leading competitor wet mop system average disposable pad price. Rejuvenate™ Total US MSRP \$29.99 through 06.02.2024

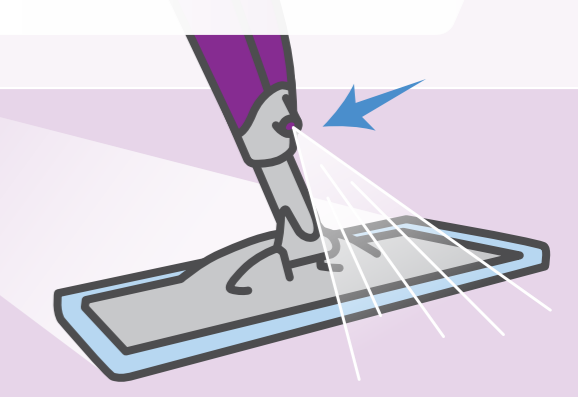


Multi-Purpose Use

Scrub Pad Lifts & Removes Dirt



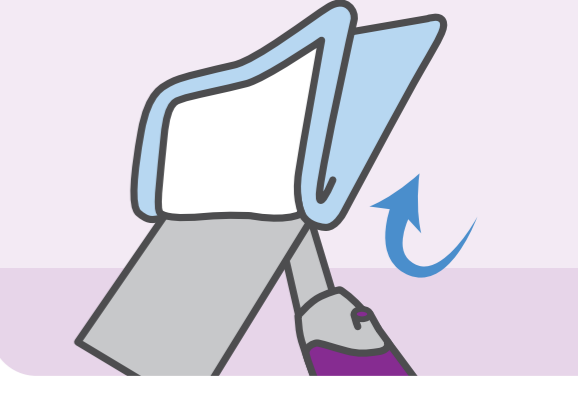
Directional Nozzle For An Even Mist



Swivel Mop Head To Clean Hard-To-Reach Spaces



Machine-Washable Microfiber Pads: Economical & Sustainable



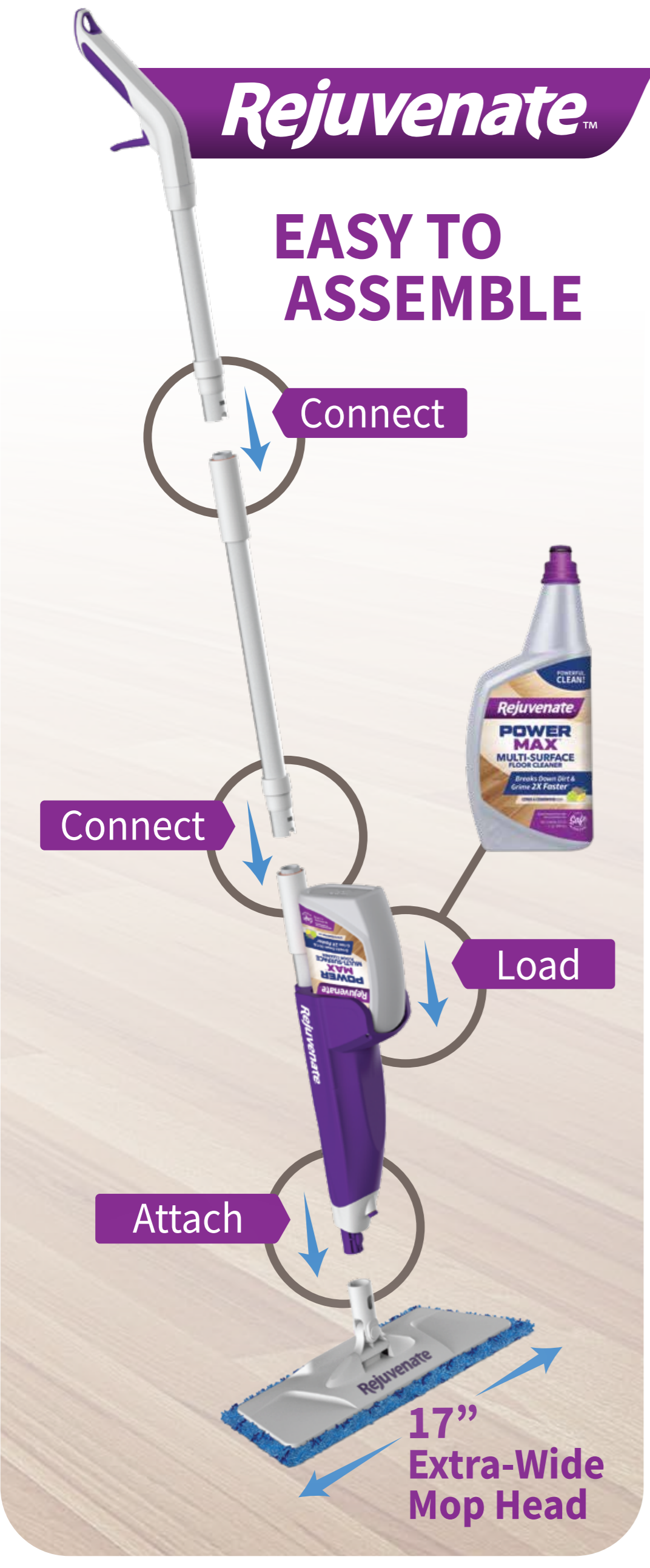
Safe for Multi-Surface Use



Tile

Laminate & Vinyl

Hardwood



Rejuvenate™

EASY TO ASSEMBLE

Connect

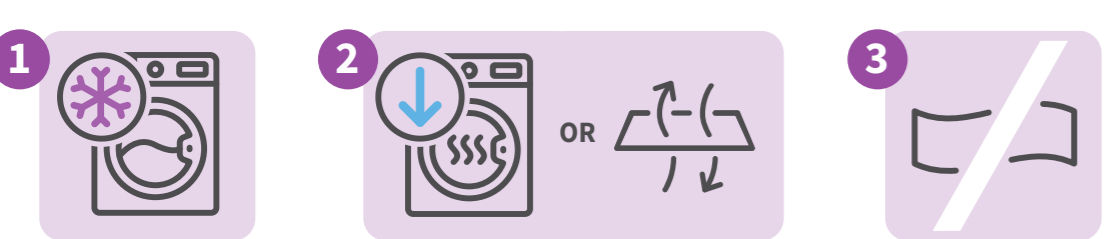
Connect

Load

Attach

17" Extra-Wide Mop Head

MICROFIBER PAD CARE INSTRUCTIONS



- 1 Wash in a regular cycle with cold water and a mild detergent.
- 2 Dry at low heat or air dry.
- 3 DO NOT use fabric softener or dryer sheets. They will leave a residue and inhibit the microfiber's cleaning ability.

FOR FLOOR RESTORATION (Microfiber Cleaning Pad Only)
Microfiber PowerMax™ Pad and scrub pad not intended for floor restoration use



- 1 Use Rejuvenate® Floor Restorers to fill in scratches, shine and protect your floors. Available in Hardwood Satin, Hardwood Gloss and All Floors Restorer.
- 2 Rejuvenate® Microfiber Pads are recommended to use with our floor restoration products.
- 3 NOTE: When using restorer products, microfiber pads must be rinsed thoroughly with warm water and mild soap immediately after use. Do not allow restorer liquid to dry on mop pads.

MONEY-BACK GUARANTEE
If you are not satisfied with this product for any reason, send your written request for a refund to the address below, together with the original dated store receipt showing the price you paid. Please allow 6-8 weeks for processing.

NOTICE: To the extent consistent with applicable law, buyer assumes all responsibility for safety and use not in accordance with directions.
QUESTIONS? Call 877-959-1234 or write: PO Box 142489, St. Louis, MO 63114

Rejuvenate™ PowerMax™ Multi-Surface Floor Cleaner
STORAGE: Keep in cool, dry place out of direct sunlight. Store between 40°F-90°F.

PRECAUTIONARY STATEMENTS: KEEP OUT OF REACH OF CHILDREN AND PETS. No adverse effects are expected, but if ingestion or irritation occurs, consult a medical professional.

INGREDIENTS: Water, Isopropylalcohol, Caprylyl/Capryl Glucoside, C-11-15 Alkyl-12, Isopropyl Myristate, Fragrance, Trisodium 2-(2-[(1-Carboxy-2-Carboxylatoethyl)amino]ethyl)amino]butanedioate, Sodium Citrate, Magnesium Nitrate, Methylchlorosulfazolinone, Methylisothiazolinone.

To learn more about ingredient information and Rejuvenate products, visit www.Rejuvenatecleaning.com



POWERFUL
CLEAN!

Rejuvenate™

POWER
MAX™
MULTI-SURFACE
FLOOR CLEANER

Rejuvenate™

Breaks Down Dirt &
Grime 2X Faster*

POWER
MAX™
MULTI-SURFACE
FLOOR CLEANER

CITRUS & CEDARWOOD SCENT



*Compared to Rejuvenate™ All Floors Cleaner
†When used per directions on back

Net Contents 32 fl oz
(1 qt / 946 mL)



†When used per directions
and precautions below.
For additional details, visit
rejuvenatecleaning.com/safe

Rejuvenate™ PowerMax™ Multi-Surface Floor Cleaner quickly breaks down dirt and grime for a powerful and easy clean. It is safe to use on all sealed floors, including hardwood floors.

DIRECTIONS: For use on sealed hardwood, tile, vinyl and laminate floors. Always test on an inconspicuous area first.

1. Spray the cleaner on the floor surface area.
2. Mop with grain of the floor.
3. Allow the floor to dry completely before walking.

NOTE: Only use when temperatures are above 50°F. Do not oversaturate.



For best results, use with:

Click n Clean™
Multi-Surface Spray Mop



+



=



BOTTLE

ADAPTER

CARTRIDGE

MONEY-BACK GUARANTEE

If you are not satisfied with this product for any reason, send your written request for a refund to the address below, together with the original dated store receipt showing the price you paid. Please allow 6-8 weeks for processing.

NOTICE: To the extent consistent with applicable law, buyer assumes all responsibility for safety and use not in accordance with directions.

QUESTIONS? Call 877-959-1234 or write: PO Box 142489, St. Louis, MO 63114

STORAGE: Keep in cool, dry place out of direct sunlight. Store between 40°F-90°F.

PRECAUTIONARY STATEMENTS: KEEP OUT OF REACH OF CHILDREN AND PETS. No adverse effects are expected, but if ingestion or irritation occurs, consult a medical professional.

INGREDIENTS: Water, Isopropylidenedeglycerol, Caprylyl/Capryl Glucoside, C-11-15 Alketh-12, Isopropyl Myristate, Fragrance, Trisodium 2-((2-[(1-Carboxy-2-Carboxylatoethyl)Amino] Ethyl)Amino)Butanedioate, Sodium Citrate, Magnesium Nitrate, Methylchloroisothiazolinone, Methylisothiazolinone.

To learn more about ingredient information and Rejuvenate products, visit www.Rejuvenatecleaning.com

PROOF OF PURCHASE

FPO UPC
6 78408 00401 4



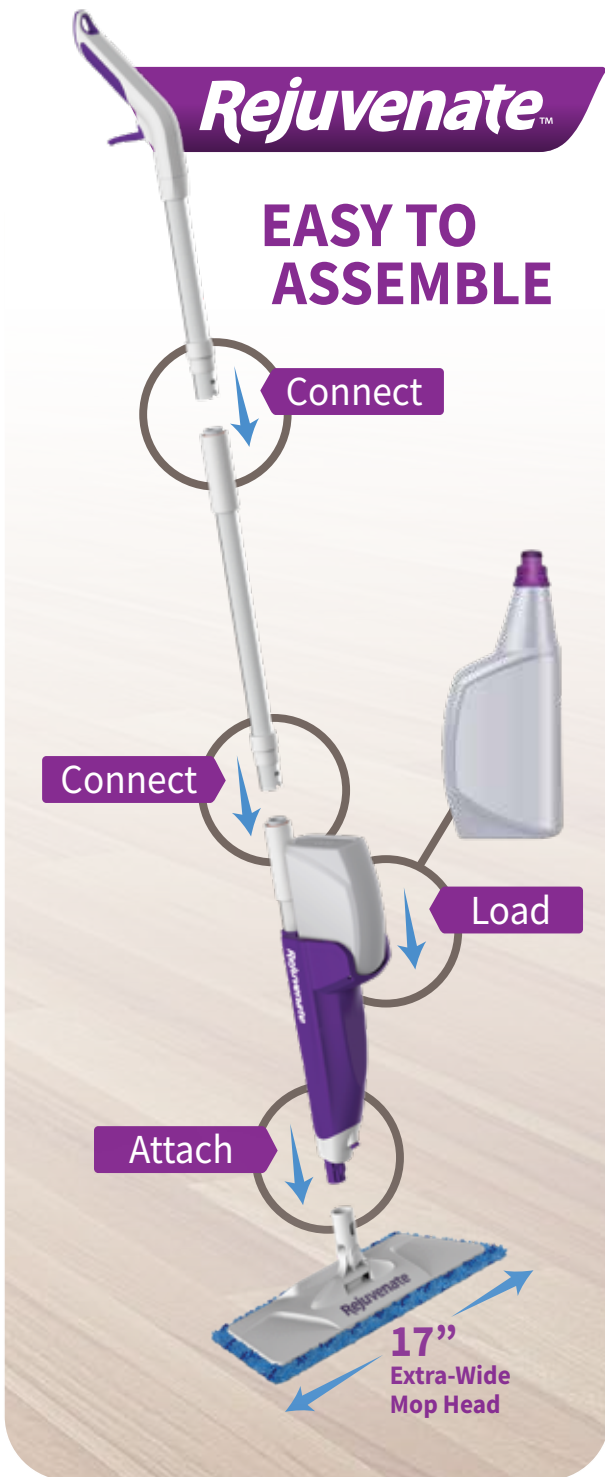
For Life Products, LLC
PO Box 142489
St. Louis, MO 63114

Follow Us @RejuvenateProducts



Rejuvenate™

EASY TO ASSEMBLE



Connect

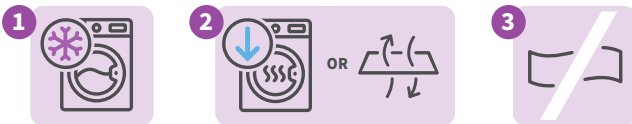
Connect

Load

Attach

17"
Extra-Wide
Mop Head

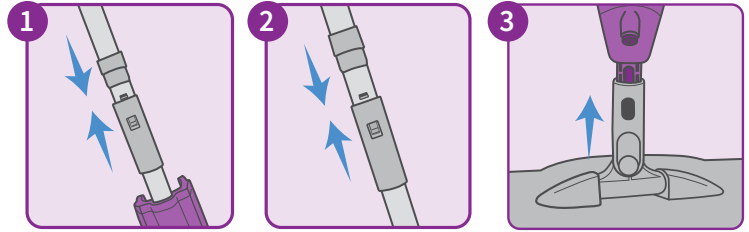
MICROFIBER PAD CARE INSTRUCTIONS



- 1 Wash in a regular cycle with cold water and a mild detergent.
- 2 Dry at low heat or air dry.
- 3 DO NOT use fabric softener or dryer sheets. They will leave a residue and inhibit the microfiber's cleaning ability.

**Rejuvenate™ Click n Clean™
Multi-Surface Spray Mop System**

Assembly Instructions



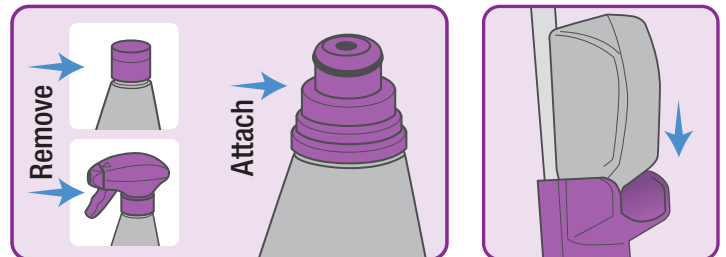
1 Attach the middle pole section to the lower pole. Line up notches as shown and lock into place.

2 Attach the upper pole section to the middle pole. Line up notches as shown and lock into place.

3 Attach mop base to lower pole section and lock into place.

Adapters

For Cleaning & Speed-Mopping Floors



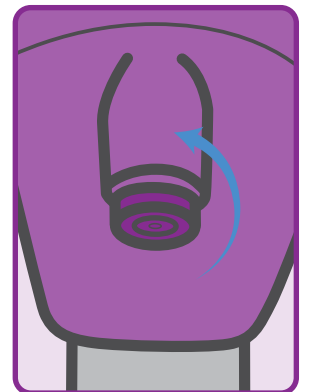
Remove bottle cap or trigger. Attach reusable bottle adapter to bottle top until secure. Do not discard adapters with empty bottles.

Insert bottle with attached bottle adapter into the bottle reservoir.

If The Nozzle Clogs

- Remove the bottle and dispose of any remaining cleaner in the reservoir.
- Remove the nozzle by turning it counterclockwise.
- Soak nozzle in warm water for 1-2 minutes and rub the tip to clear any blockages.
- Replace nozzle by turning it clockwise.

If the steps above don't resolve the clogging, please contact customer service at 877-959-1234 for a free nozzle replacement.

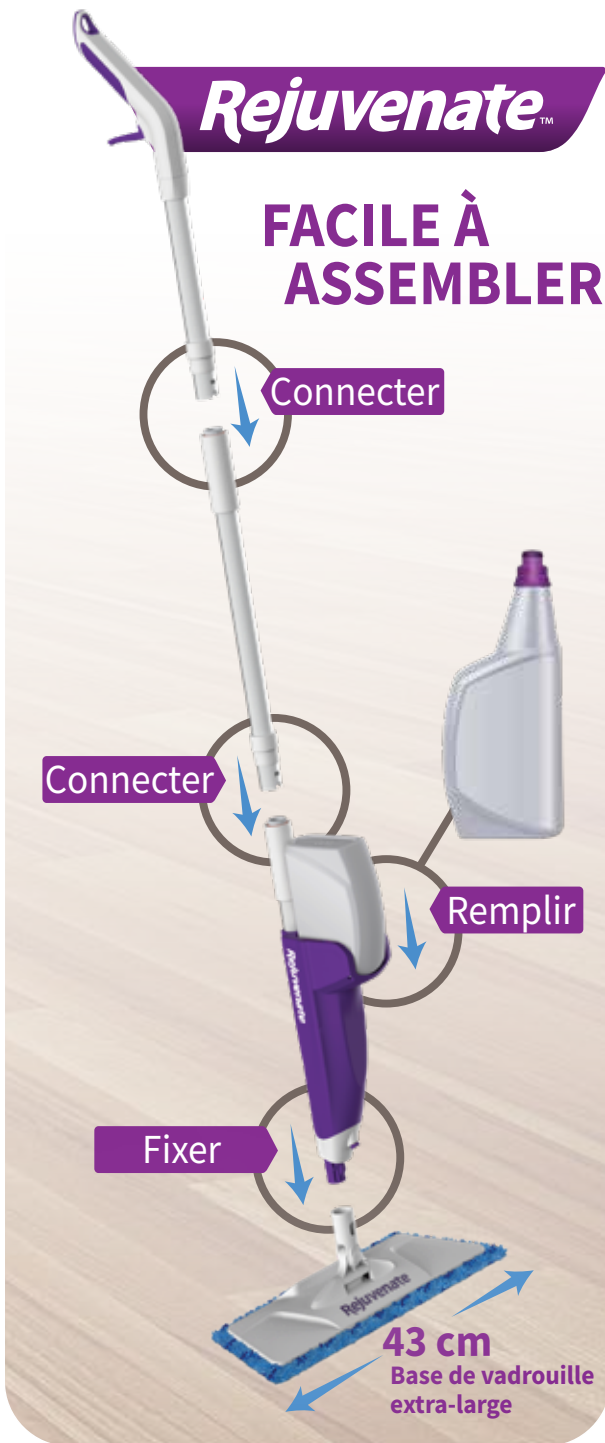


To purchase Click n Clean™ products and accessories, please visit us at www.RejuvenateCleaning.com

QUESTIONS? Call 877-959-1234 or write:
PO Box 142489, St. Louis, MO 63114

Rejuvenate™

FACILE À ASSEMBLER



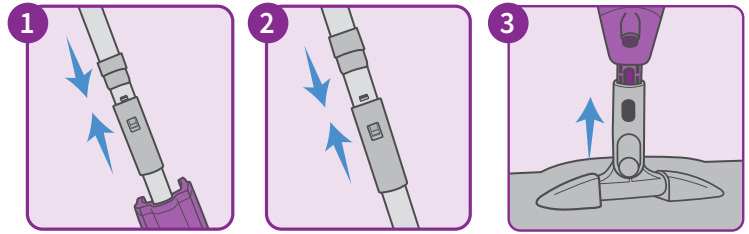
INSTRUCTIONS D'ENTRETIEN DES TAMPONS EN MICROFIBRE



- 1 Lavez à l'eau froide au cycle régulier avec un détergent doux.
- 2 Séchez à basse température ou à l'air libre.
- 3 N'utilisez PAS un assouplisseur à tissus ou un assouplisseur en feuille pour la sècheuse. Les assouplisseurs laissent des résidus et nuisent au pouvoir nettoyant des microfibres.

System De Balai Pulvérisateur Multi-Surfaces Clic-net™ De Rejuvenate™

Instructions D'Assemblage



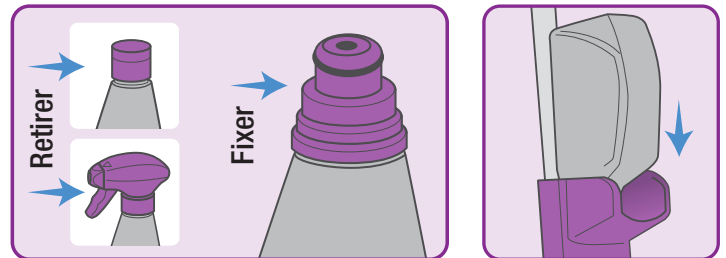
1 Fixez la section centrale du manche à la section inférieure. Alignez les encoches tel qu'illustré, puis verrouillez en place.

2 Fixez la section supérieure du manche à la section centrale. Alignez les encoches tel qu'illustré, puis verrouillez en place.

3 Fixez la base de la vadrouille à la section inférieure du manche, puis verrouillez en place.

Adaptateurs

Pour Nettoyer Et Essuyer Rapidement Les Planchers



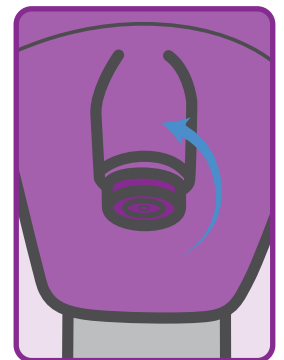
Retirez le bouchon ou la gâchette de pulvérisation de la bouteille. Fixez solidement l'adaptateur réutilisable sur le dessus de la bouteille. Ne jetez pas l'adaptateur avec la bouteille lorsqu'elle est vide.

Insérez la bouteille avec l'adaptateur dans le réservoir à bouteille.

Si La Buse Se Bouche

- Retirez la bouteille et jetez tout nettoyant non utilisé dans le réservoir.
- Retirez la buse en la tournant dans le sens antihoraire.
- Trempez la buse à l'eau tiède pendant 1 à 2 minutes puis frottez la pointe pour enlever tout obstacle.
- Remettez la buse en place en la tournant dans le sens horaire.

Si les étapes ci-dessus ne permettent pas de résoudre le problème d'obstruction, veuillez contacter le service clientèle au 877 959-1234 pour un remplacement gratuit de la buse.



Pour acheter les produits et accessoires Clic-net™, veuillez nous rendre visite à www.RejuvenateCleaning.com

DES QUESTIONS? Composez le 877 959-1234 ou écrivez au : PO Box 142489, St. Louis, MO 63114